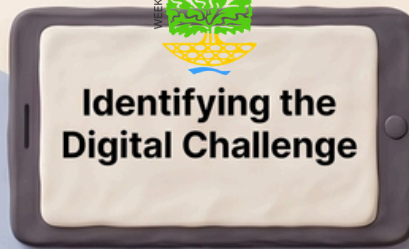


# Safeguarding in a Digital World: A Parent's Guide to Our Response



## Identifying the Digital Challenge



### The Rise of AI Image Risks

Criminals can use AI to manipulate identifiable school photos into harmful, inappropriate content.



### Hidden Data Vulnerabilities

Standard digital photos contain "metadata" that can unintentionally reveal a child's location or routine.



### Smartphone Impact on Wellbeing

Unrestricted smartphone access increases risks of cyberbullying, distraction, and reduced face-to-face social interaction.

## Our Safeguarding Response



### Strengthening Image Security

We now prioritise using group shots, side profiles, and blurred backgrounds instead of face-on photos.



### Metadata Scrubbing & Audits

All digital data is stripped from images before publication to protect children's privacy and locations.



### A Balanced Tech Education

Pupils are taught a sequenced curriculum focused on critical thinking, safe behaviour, and the benefits of technology.